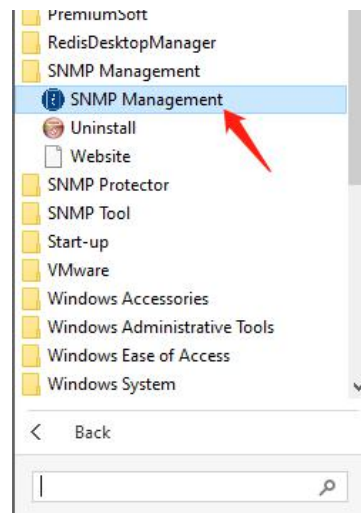


# SNMP Management Usage Instructions

## 1. Software Download and Installation

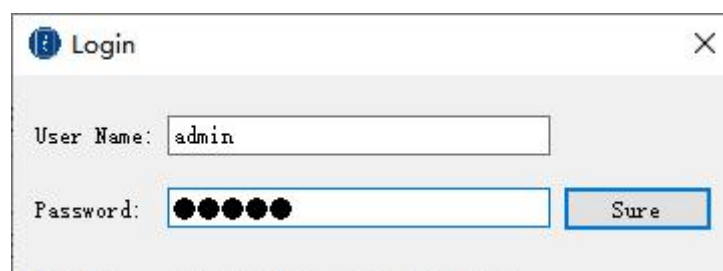
- ① Download installation file from <http://download.ksdatacloud.com>--Centralized Monitoring Software--UPS Management Software;
- ② After installation, users can find "SNMP\_Management" in Windows "Start", click "SNMP Management" to start.



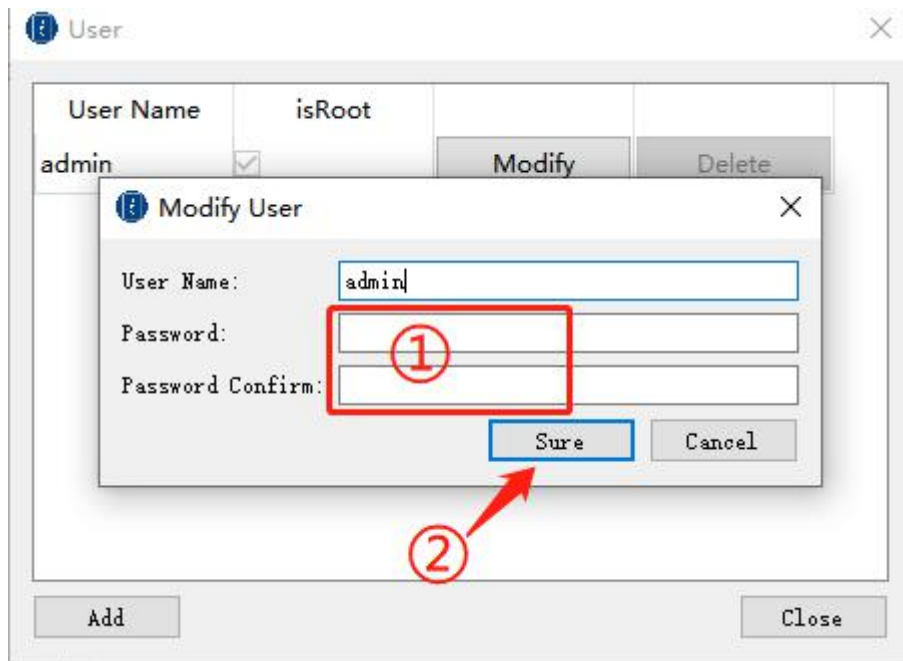
## 2. Software Instructions

### (1) Software login and password change

On the login page, enter the user name and password. The default user name and password are admin and admin respectively.

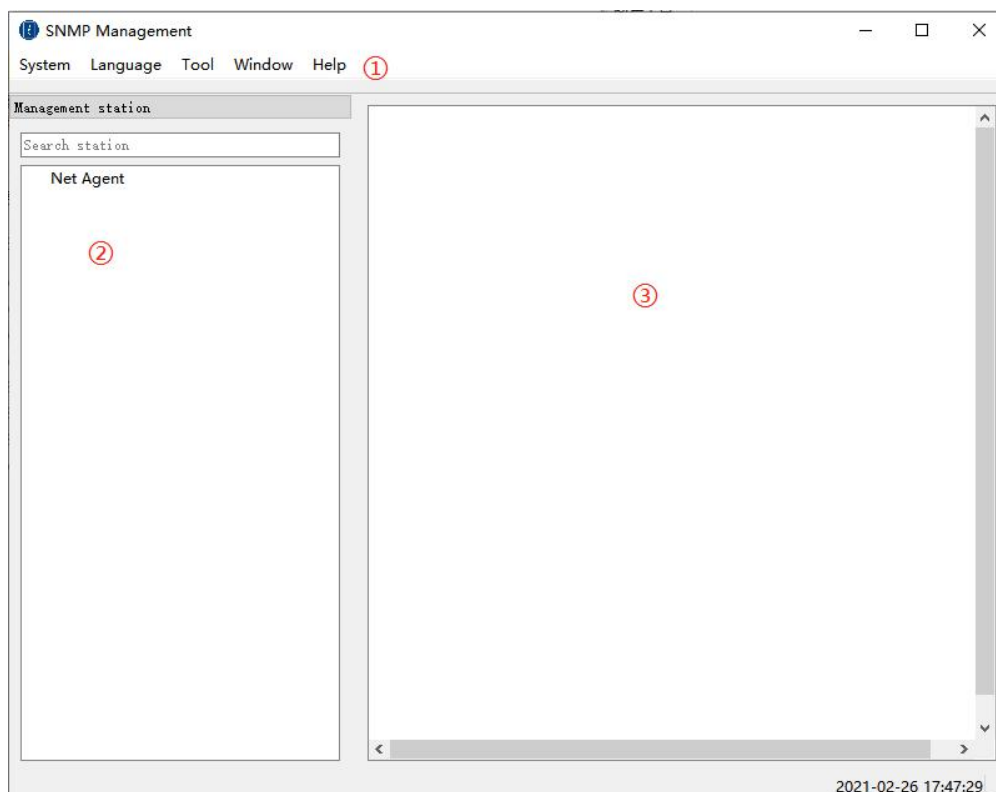


If you want to change the login password, click [System] -- [User], ① enter the new password twice, ② click "Sure" to complete.



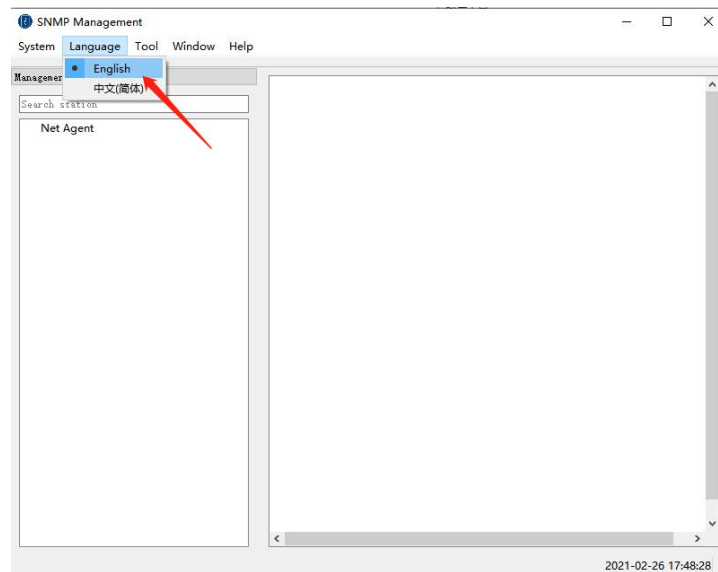
## (2) Software Overview

The software interface is mainly divided into three parts: ① Menu bar, ② Management station ③ Main data interface, as shown in the figure:



### A. Language Setting

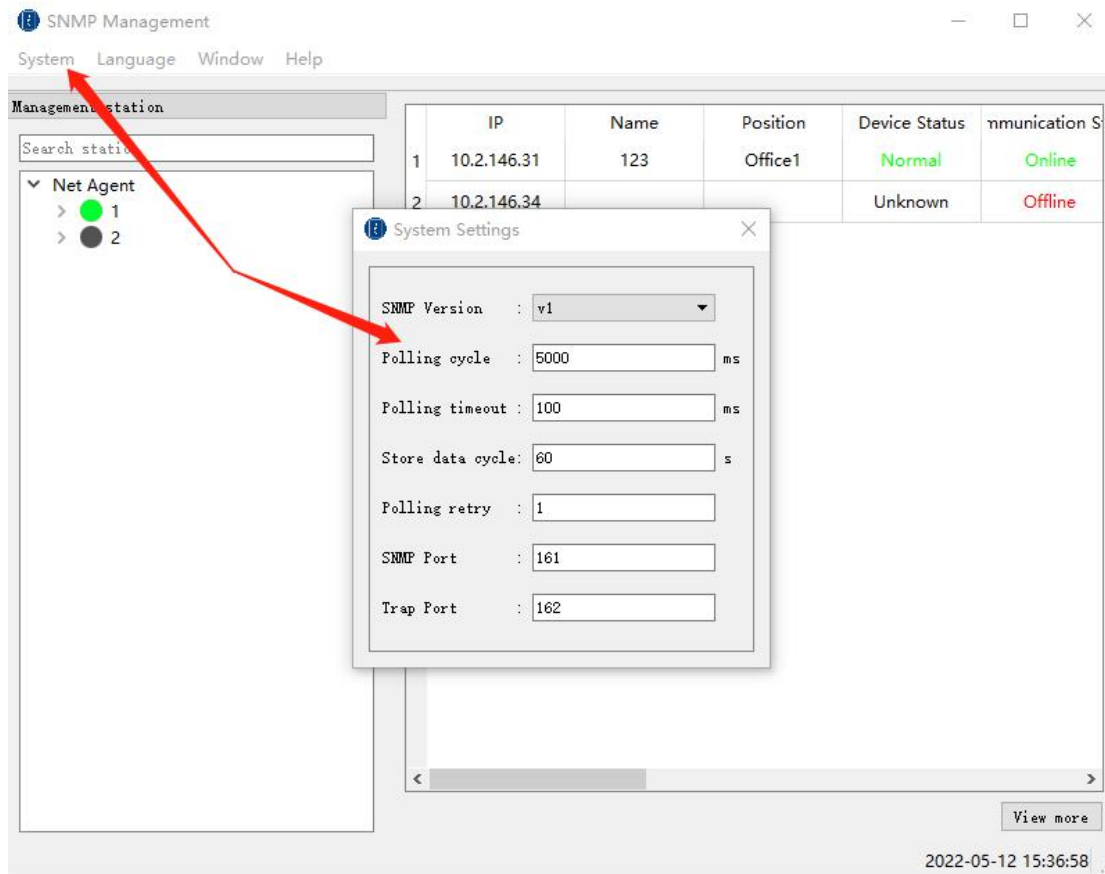
The default language of the software is English, and the user can choose from the menu bar, "Language", to select the language type displayed on the interface.



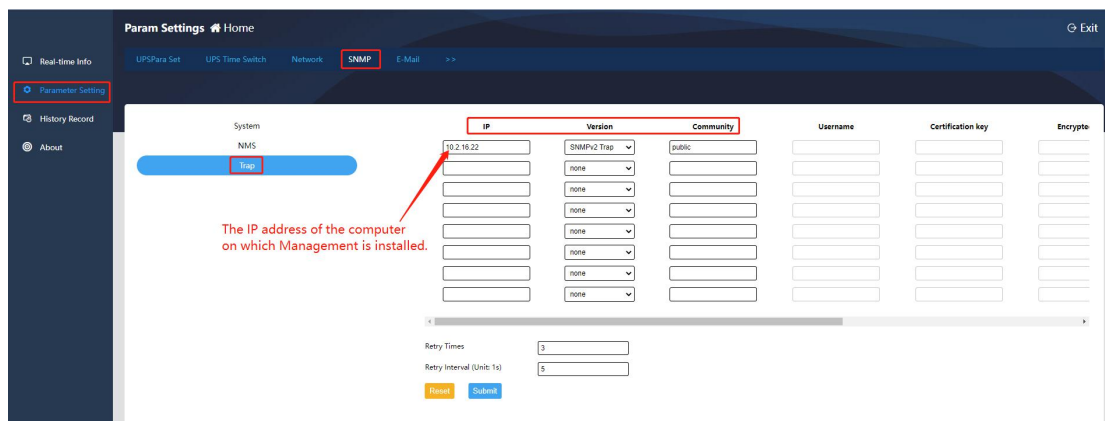
## B. System Setting

System settings are used to set the communication parameters of the software and SNMP devices:

- SNMP Version: SNMP protocol version, this software supports SNMP v1 and SNMP v2c;
- Polling cycle: Cycle of software polling device data;
- Polling timeout: Timeout of polling single device;
- Store data cycle: Cycle of storing device data;
- Polling retry: Number of retries after polling failed.
- SNMP Port: Data collection port, Use the default port number 161.
- Trap Port: Port for alarm push, Use the default port number 162.

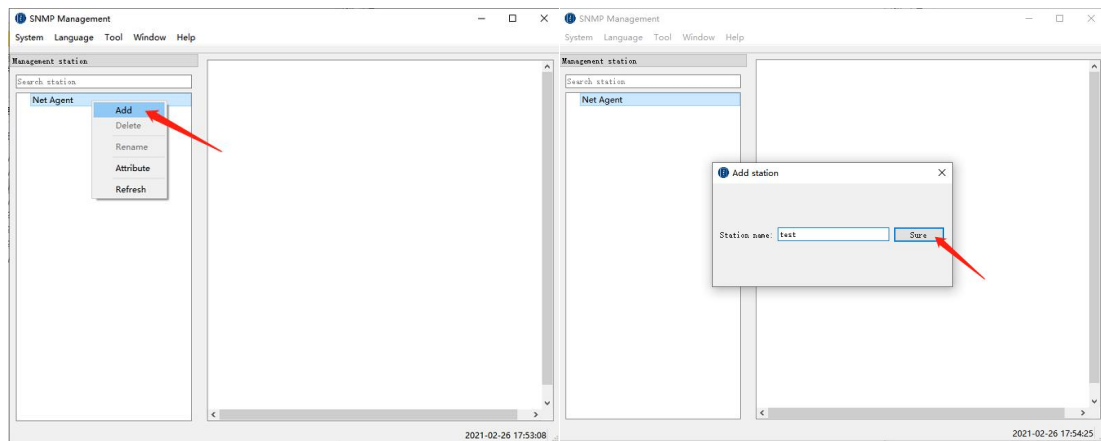


**Attention:** If you want to implement the alarm push function, configure the IP address of the PC where the Management software is installed in the Trap Settings of the SNMP card monitoring web page. Set the version to SNMPv2 Trap. The community string set in community must be the same as the community string set in [D. Device Addition](#).



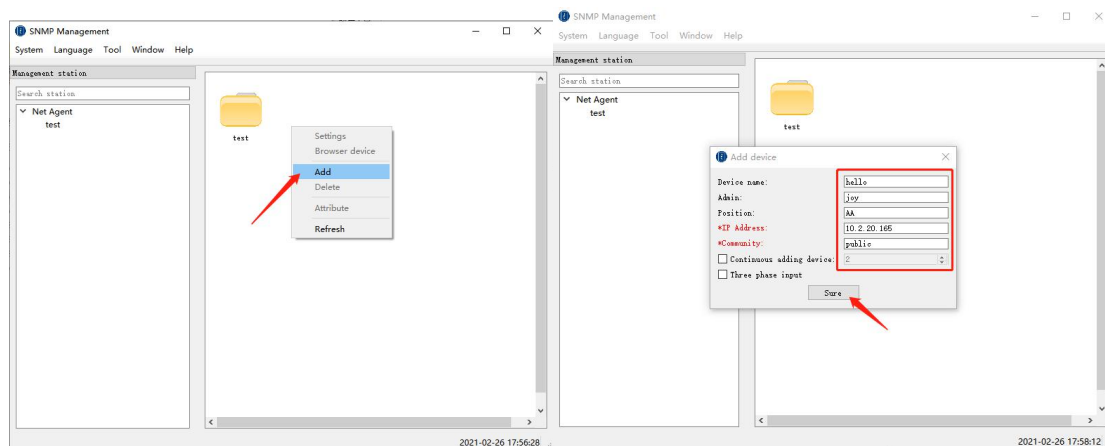
### C. Station Addition

When using, firstly need to add the corresponding station in the Net Agent category: right-click the Net Agent item on the left side of the interface, select "Add", after completing the station name, click the "Sure" to complete the addition of the main station;



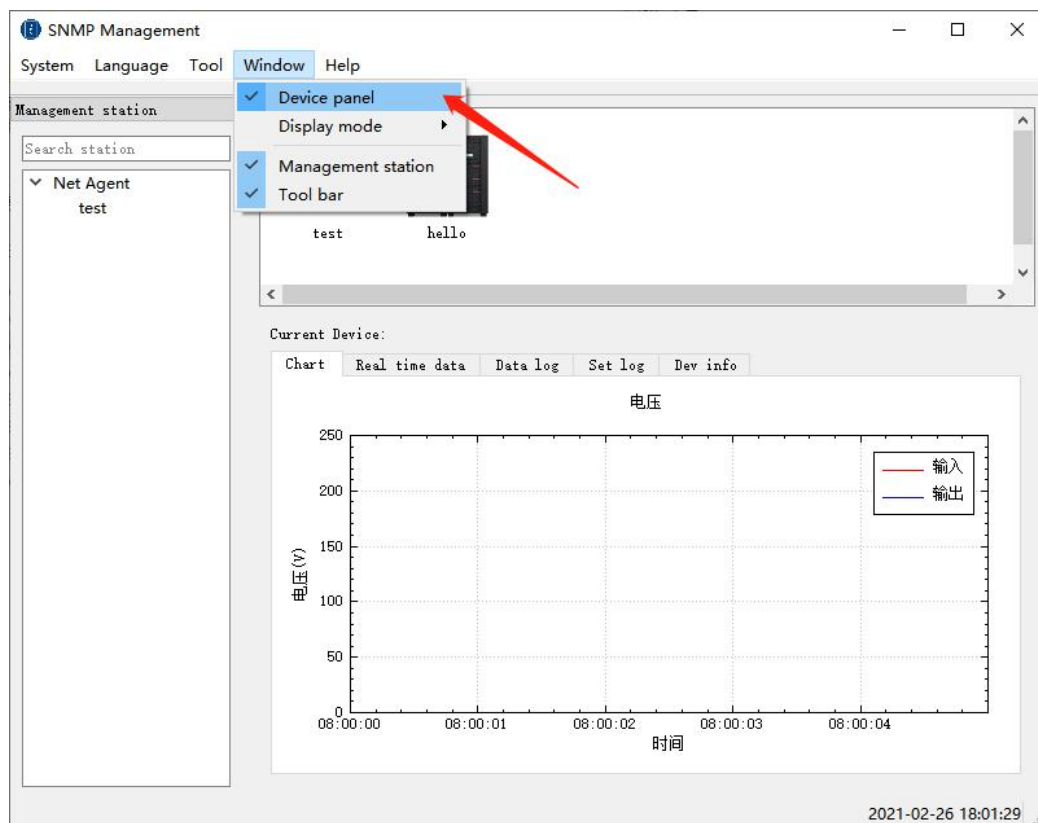
#### D. Device Addition

After completing the addition of the master station, you need to add the device under the corresponding station, click the name of the added station, right-click on the device data interface on the right, and then select "Add", the software will pop up the device addition interface, fill in. Then, click "Sure", the device will be added to the corresponding station, and the software can monitor the device in real time.

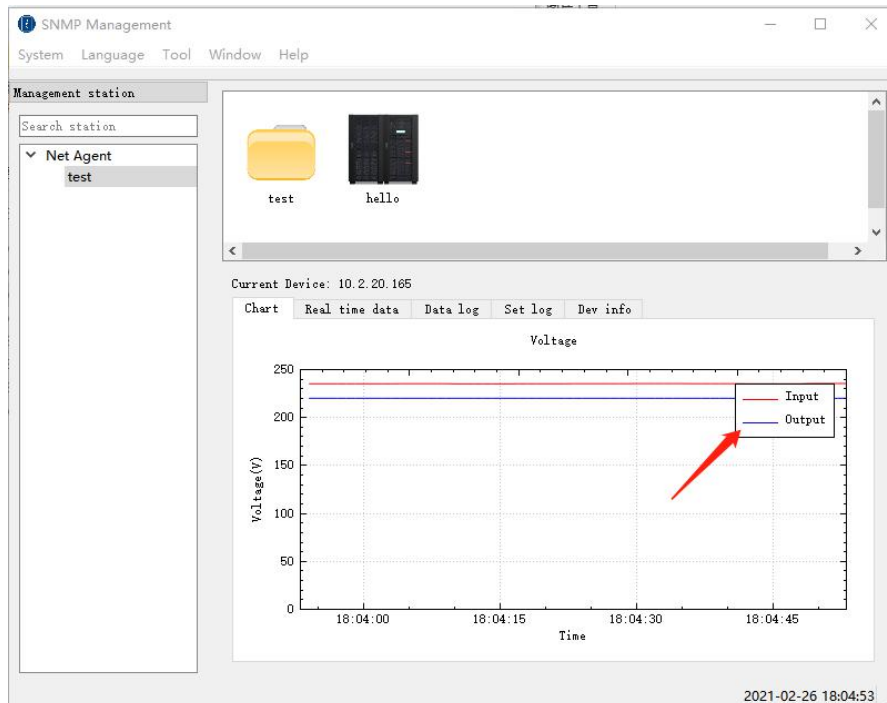


#### E. Device Panel

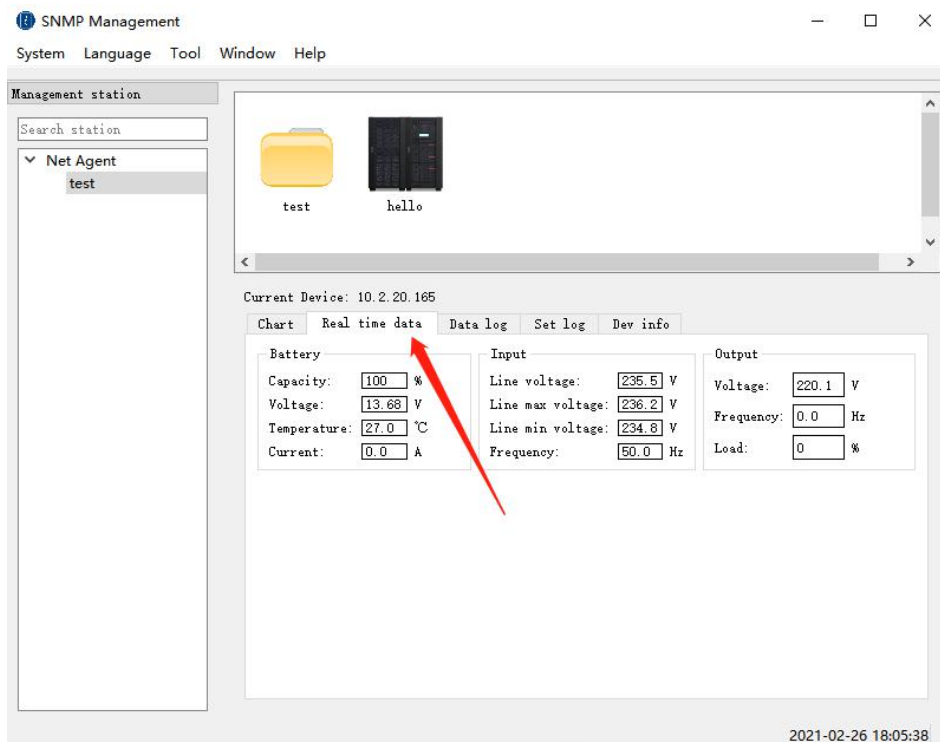
Click "Window--Device panel" to open the data panel, select the device to view the related data;



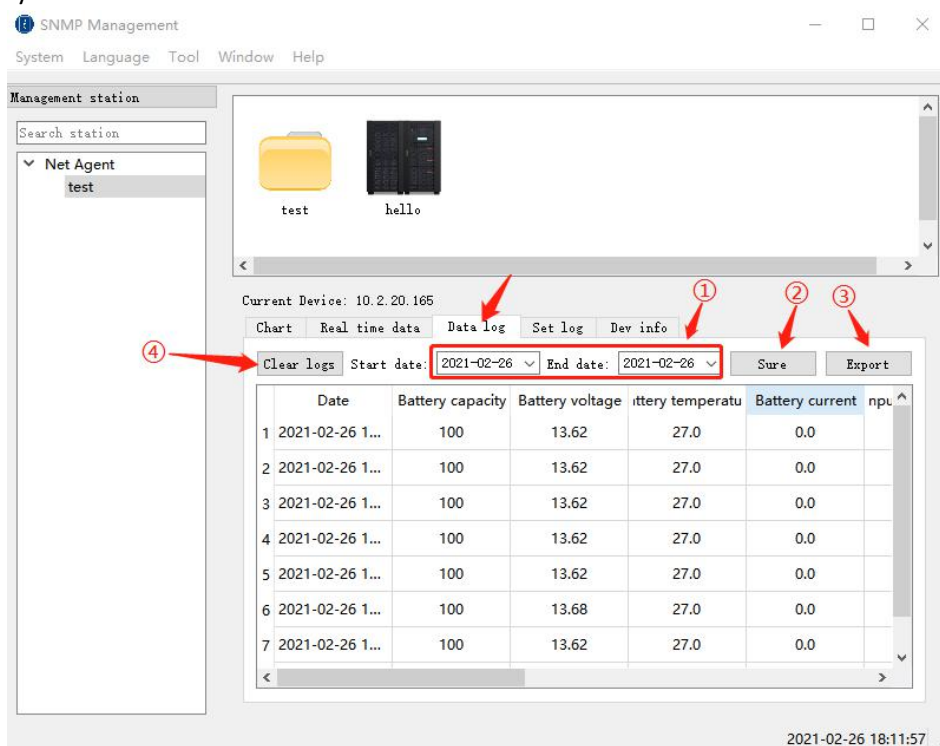
① Chart: Display the dynamic curve diagram of the input and output voltage of the device, and can visually observe the changes of input and output voltage in real time.



② Real time data: Display specific data of battery、input and output information of the device.



③ Data log: Users can choose to read the data records within the time range by themselves. First select the start date and end date of the data record to be queried, and then click the "Sure" button to query the data records within the selected date range. The software supports exporting data records to various types of Excel files. Click the "Export" button to export the currently read data records. Click the "Clear Logs" button to clear all data records of the currently selected device.



④ Set log: Record software settings record.

⑤ Dev info: Display current device information connected to SNMP card.

- Model: Device model connected to SNMP card;
- Name: Device name connected to SNMP card;
- UPS firmware version: UPS connected to SNMP card;
- Date of manufacture: Device's date of manufacture;
- Serial number: Device's manufacture serial number;
- Agent firmware version: Agent version number of SNMP card.

F. Version Information

Click [Help]--[About], can view the software version information in the pop-up window, including software name, version number, build date of the program, copyright attribution and application introduction.

